

PRESSURE PVC PIPWORK & FITTINGS

PVC Pressure pipe

G

4" Class C Pressure pipe (3mtrs)	PW7078	58.28
3" Class C Pressure pipe (3mtrs)	PW7071	47.74
2" Class C Pressure Pipe (3mtrs)	PW694	22.00
2" Pressure Pipe per mtr	PW693	8.00
1.5" Class E Pressure Pipe (3mtrs)	PW676	19.43
1.5" Pressure Pipe per mtr	PW675	3.03
1" Class E pressure pipe (per 3mtrs)	PW7601	11.33



Sockets / Barrels / Convertors

V

1" Plain Socket (Pressure)	PW7603	1.23
1.5" Plain Socket (Pressure)	PW677	2.55
2" Plain Socket (Pressure)	PW699	3.63
3" Plain Socket (Pressure)	PW7074	14.31
4" Plain Socket (Pressure)	PW7081	20.91
50mm to 1.5" Plain Socket (Pressure)	PW679	3.64
63mm to 2" Plain Socket (Pressure)	PW707	4.90
110mm - 4" pressure Socket (Straigh con)	PW7091	20.75
2"- 1.5" Threaded Nut Inside/Out	PW685	8.43
1.5" Barrel Nipple (Male-Male)	PW690	6.43
2" Male - Male Threaded spigot	PW7641	9.29



Adapters (Plain to Threaded)

V

Plain male - female thread 1.5" - 1.5"	PW689	5.77
Plain male - female thread 2" - 2"	PW705	7.92
1.25" Female thread - 50mm Socket (for DM)	PW6711	8.36
1.5" Socket (Plain - Female Threaded) Pressure	PW678	7.87
2" Socket (Plain -Female Threaded) Pressure	PW698	7.87
4" Pressure Socket Plain - Thread (Pressure)	PW7086	34.17
2.5" Female thread - 75mm Socket (Blue ECO)	PW7069	47.17



Pressure tank cons - Flange / Thread

M

1.5" Threaded Tank connector (Grey Pressure)	PW804	6.32
2" Threaded Tank connector (Grey Pressure)	PW8041	10.22
1.5" Flanged tank connectors (Grey Pressure)	PW800	6.80
2" Flanged tank connectors (Grey Pressure)	PW801	8.51
3" Flanged tank connectors (Grey Pressure)	PW802	9.38
4" Flanged tank connectors (Grey Pressure)	PW803	13.78



PRESSURE PVC PIPWORK & FITTINGS

Bends and Elbows

V

25mm pressure 90 bend	PW7602	2.61
1" 90 Bend (Pressure)	PW7088	2.24
1.5" 90 Bends (Pressure)	PW681	4.72
2" 90 Bend (glue) (Pressure)	PW702	6.54
3" 90 bends (Pressure)	PW7072	20.91
4" 90 bends (Pressure)	PW7079	31.20
2" 90 Bend (Plain to Threaded) Pressure	PW703	12.73
1.5" 90 Bends (Plain - Threaded) Pressure	PW682	8.29

1.5" Swept 90 bend (Pressure)	PW7642	13.73
2" Swept 90 bend (Pressure)	PW7643	17.97
3" Swept 90 bend (Pressure)	PW7644	46.13
4" Swept 90 bend (Pressure)	PW7645	76.83

1" 45 Bend (Pressre)	PW7089	3.20
1.5" 45 Bends (Pressure)	PW680	5.21
2" 45 Bend (Pressure)	PW701	7.58
3" 45 bends (Pressure)	PW7073	18.67
4" 45 bends (Pressure)	PW7080	39.27



Tees

V

1" Tee pressure	PW7090	2.85
1.5" Tee pressure	PW684	5.63
2" Tee Pressure	PW704	8.72
3" Tee Pressure	PW7077	26.73
4" Tee Pressure	PW7084	41.58



Reducers / end caps

V

1" End Cap (Pressure)	PW300	1.50
1.5" End Cap (Pressure)	PW6872	2.32
2" End Cap (Pressure)	PW6873	2.69
3" End Cap (Pressure)	PW6874	9.77
4" End Cap (Pressure)	PW6875	13.64
4"-3" Reducer (Pressure)	PW7094	15.39
3" - 2" Reducer (Pressure)	PW7093	12.00
2"-1.5" Reducers (Pressure)	PW706	3.57
2"-1" Reducers (Pressure)	PW7062	4.11
1.5"-1" Reducers (Pressure)	PW7061	2.61



Socket nipples

V

1" Socket Nipple	PW7092	2.32
1.5" Socket Nipple	PW688	5.52
2" Socket Nipple	PW700	7.04



BLACK WASTE PIPWORK & FITTINGS

Solvent-weld pipe

G

110mm Solvent Weld Pipe (per 3m length)	PW617	31.26
3" Solvent Weld Pipe (per 3m length)	PW618	30.05
2" Solvent Weld Pipe (per 3m length)	PW619	16.94
1.5" Solvent Weld Pipe (per 3m length)	PW620	9.85



Straight connectors

M

110mm Straight connector (Solvent weld)	PW622	5.32
3" Straight connectors (Solvent weld)	PW635	6.33
2" Straight connectors (Solvent weld)	PW643	1.88
1.5" Straight connectors (Solvent weld)	PW655	1.20



110mm Clamp Saddle 2" bsp Female thread	PW627	13.84
110mm Clamp Saddle 1.5" bsp Female thread	PW628	12.76



45 bends

M

110mm 45 bend (solvent weld)	PW625	7.62
3" 45 Bend (solvent)	PW636	9.38
2" 45 Bends (Solvent Weld)	PW644	1.88
1.5" 45 Bends (Solvent Weld)	PW656	1.20



90 bends

M

110mm 90 bend (solvent weld)	PW623	8.26
3" 90 Bend (solvent)	PW637	11.00
2" 90 Bends (Solvent weld)	PW645	1.88
1.5" 90 Bends (Solvent Weld)	PW657	1.20



T's

M

110mm Tee (Solvent weld)	PW633	13.72
3" Tee (Solvent weld)	PW641	17.08
2" Tee (Solvent weld)	PW646	2.80
1.5" Tee (Solvent weld)	PW658	1.54



Reducers

M

110mm-3" Reducer (Solvent weld)	PW632	3.89
3" to 2" Reducer (Solvent weld)	PW642	4.20
2"-1.5" Reducers (Solvent weld)	PW650	1.18
2"- 1.5" Threaded Nut Inside/Out	PW685	5.03



BLACK WASTE PIPWORK & FITTINGS

End caps

M

110mm End Caps (Solvent weld) *Fits over pipe*	PW629	6.12
3" End Caps (Solvent weld) *Fits inside fitting*	PW640	16.80
2" End Caps (Solvent weld) *Fits over pipe*	PW652	2.04
1.5" End Caps (Solvent weld) *Fits over pipe*	PW664	2.04



Flanged tank connectors (Black waste)

I

110mm Flanged Tank connector	PW630	9.49
110mm Radial Tank Connector	PW631	13.59
3" Flanged Tank connectors	PW638	6.49
2" Flanged Tank Connector	PW649	5.70
1.5" Flanged Tank connectors	PW663	4.81



Threaded tank connectors

I

110mm Threaded Tank Connector (Black Waste)	PW6311	12.60
3" Threaded Tank connectors (Black Waste)	PW6381	11.61
2" Threaded Tank connectors (Black Waste)	PW647	5.40
1.5" Threaded Tank connectors (Black Waste)	PW660	3.73
1.5" Threaded Tank connectors (WS32)	PW662	4.30



Bottom drains

I

110mm Economy Bottom Drain with chamber	PW634	23.54
110mm Tommy Drain	PW6341	15.53
110mm Weighted Suction Dome (Standard)	PW6343	107.29
2" Bottom drain with chamber	PW6542	18.91
2" Tommy Drain	PW6541	10.97
1.5" Tommy Drain	PW760	10.95
1.5" Reversed bottom drain (Weighted with 1.5" Pickup)	PW6342	99.63
Supa Tuff - Bottom Drain Lid (Retro fit)	PW6344	148.76



110mm Reversed drain 1.5" Reversed bottom drain



Bottom drain with chamber Tommy drain

SUPA-Tuff drain lid (Solid construction)

Male-male joiners

I

2" Male to Male Joiner KK	PW653	1.18
1.5" Male to Male Joiner KK	PW667	1.18
1.5" "Dildo" pickup strainer	PW761	3.51



Split connectors

I

1.5" Waste Split con (Black)	PW659	2.34
2" Waste Split con (Black)	PW6591	3.03
3" Waste Split con (Black)	PW6592	9.06
110mm Waste Split con (Black)	PW6594	13.16



Valves & Clips

Y distributor valves **NEW**

I

Aquaforte 3-way divider (3/4inch - 1inch)	VV760	12.98
Aquaforte 3-way divider (1inch - 1.25inch - 1.5inch)	VV761	21.64

Easy to use 3-way dividers with 2 ball valves. Ideal for water ornaments, waterfalls, ect.
Available in Ø20/25mm and Ø25/32/38mm.



Black waste ball valves

I

2" Kockney Koi Ball Valve	VV722	17.77
1.5" Kockney Koi Ball Valve	VV723	13.72

The Kockney Koi ball valves are competitively priced for use with waste pipe



X-Clear 3-way Valve

I

X-Clear 63mm 3-way valve	VV728	59.80
--------------------------	-------	-------

The X-clear 63mm 3-way valve can be converted to 2" Pressure with the use 3 x Thin bushes (our code **VV740**)



Non-return valves

I

Flapper Valve Non - Return 1" (inc split unions)	VV736	33.88
Flapper Valve Non - Return 1.5" (inc split unions)	VV731	46.13
Flapper Valve Non - Return 2" (inc split unions)	VV732	53.25
Flapper Valve Non - Return 3" (inc split unions)	VV7321	131.89



Hosetails

M

1" BSP Threaded Black Stepped Hose tail (1.5" / 1.25" / 1")	PW6651	1.93
1.25" BSP Threaded Black Stepped Hose tail (1.5" / 1.25" / 1")	PW6662	1.97
1.5" BSP Threaded Black Stepped Hose tail (1.5" / 1.25" / 1")	PW665	1.93
1.5" Glue Black Stepped Hose tail	PW666	1.93
2" Hose tail (1.5" Female thread)	PW708	8.18
Pressure Threaded Hosetails (1.5" BSP thread to 1.5" tail)	PW691	3.32
Pressure Threaded Hosetails (1.5" BSP thread to 2" tail)	PW692	3.42



High Quality

Cobra Pipe Clamps

I

4" Pipe Clamp Bracket (Cobra)	PW6691	15.39
3" Pipe Clamp Bracket (Cobra)	PW6692	11.09
2" Pipe Clamp Bracket (Cobra)	PW6693	4.75
1.5" Pipe Clamp Bracket (Cobra)	PW6694	3.81
1" Pipe Clamp Bracket (Cobra)	PW6695	2.55



PRESSURE PVC PIPWORK & FITTINGS

Split unions

M

1" Socket Unions (plain)	PW6871	6.16
1.5" Socket Unions (plain)	PW687	10.39
2" Socket Unions (plain)	PW695	12.17
3" Socket Unions (plain)	PW7075	50.36
4" Socket Unions (plain)	PW7082	67.72
1" Socket Unions (plain - female thread)	PW6880	7.94
1.5" Socket Union (Glue-Female thread)	PW686	12.69
2" Socket Union (Glue-Female Thread)	PW696	17.69

1.5" Socket Unions (Glue-male thread)	PW710	29.25
2" Split Union (Glue-Male Thread)	PW697	34.92
1.5" Socket Unions (FEMALE thread to MALE thread) - NEW	PW710T	16.00



female thread to male thread
NOW available

Ball Valves

H

4" Ball Valve (Double Union) RED HANDLE	VV717	232.65
3" Ball Valve (Double Union) RED HANDLE	VV718	126.62
2" Ball Valves (Double Union) RED HANDLE	VV719	30.84
1.5" Ball Valve (Double Union) RED HANDLE	VV720	21.41
1" Ball Valve (Double Union) RED HANDLE	VV7205	19.93
1" Ball Valve (Double Union) RED HANDLE (Threaded both ends)	VV7205T	25.00

110mm Ball Valve (Double Union) Technoplastic BLUE HANDLE	VV7171	176.49
4" Ball Valve (Double Union) Technoplastic BLUE HANDLE	VV7201	176.49
3" Ball Valve (Double Union) Technoplastic BLUE HANDLE	VV7202	127.95
2" Ball Valves (Double Union) Technoplastic BLUE HANDLE	VV7203	28.04
1.5" Ball Valve (Double Union) Technoplastic BLUE HANDLE	VV7204	19.98

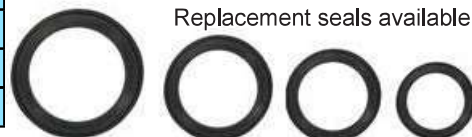
4" ERA Ball Valve	PW7209	86.52
3" ERA Ball Valve	PW7208	65.25
2" ERA Ball Valve	PW7207	21.35
1.5" ERA Ball Valve	PW7206	12.90



Valterra slide valves

H

110mm Valterra Slide Valve	VV708	66.82
4" Pressure Valterra Slide Valve	VV7081	64.42
3" Valterra Slide Valve	VV709	30.20
2" Valterra Slide Valve	VV710	21.14
1.5" Valterra Slide Valve	VV711	13.91
(1x) washer Valterra 1.5"	VV743	5.54
(1x) washer Valterra 2"	VV744	6.79
(1x) washer Valterra 3"	VV745	8.01
(1x) washer Valterra 4"	VV746	11.05



Replacement seals available

PRESSURE PVC PIPWORK & FITTINGS

Reducing Bushes

W

4" Reducing Bushes (Pressure to Waste)	VV713	7.32
3" Reducing Bushes (Pressure to Waste)	VV714	4.26
2" Reducing Bushes (Pressure to Waste)	VV715	2.10
1.5" Reducing Bushes (Pressure to Waste)	VV716	1.92
63mm to 2" Waste (Bushes)	VV750	3.60
63mm to 2" Pressure (Thin Bushes)	VV740	3.90
50mm to 1.5" Pressure (Thin Bushes)	VV738	3.60
50mm to 1.5" Waste (Bushes)	VV739	3.60



FLEXIBLE RUBBER CONNECTORS

Rubber straight connectors

P

Flexible Connector with clips 1"	PW7361	4.00
Flexible Connector with clips 1.25"	PW736	4.00
Flexible Connector with Clips 1.5"	PW737	4.38
Flexible Connector with Clips 2"	PW738	4.79
Flexible Connector with Clips 3"	PW739	7.29
Flexible Connector with Clips 4"	PW740	10.08



Rubber 90 bends

P

Flexible Bend with Clips 1"	PW7471	10.11
Flexible Bend with Clips 1.5"	PW747	10.11
Flexible Bend with Clips 2"	PW748	10.85
Flexible Bend with Clips 3"	PW749	18.41
Flexible Bend with Clips 4"	PW750	23.45



Rubber end caps

P

Flexible End Cap with Clips 1.5"	PW755	2.85
Flexible End Cap with Clips 2"	PW756	3.81
Flexible End Cap with Clips 3"	PW757	5.09
Flexible End Cap with Clips 4"	PW758	6.33



Rubber Tees

P

Flexible Tee with Clips 1.5"	PW751	11.75
Flexible Tee with Clips 2"	PW752	13.31
Flexible Tee With Clips 3"	PW753	22.72
Flexible Tee with Clips 4"	PW754	33.46



FLEXIBLE RUBBER CONNECTORS

Rubber reducing connectors

P

Flexible Reducing Connector with Clips 1.5"-1.25"	PW741	4.25
Flexible Reducing Connector with Clips 2"-1.5"	PW742	4.66
Flexible Reducing Connector with Clips 3"-2"	PW743	10.30
Flexible Reducing Connector with clips 4"-3"	PW744	11.60
Flexible Reducing Connector with clips 4"-2"	PW746	10.84
Flexible Reducing Connector with clips 4"-1.5"	PW7401	11.36
Flexible Reducing Connector with clips 6"-4"	PW7461	28.11



FLEXIBLE HOSE

Heavy Duty black koi hose

I

1.5" High Quality Black Koi Hose (per meter)	FH770	5.69
1.25" High Quality Black Koi Hose (per meter)	FH771	4.01
1" High Quality Black Koi Hose (per meter)	FH772	2.74
1.5" High Quality Black Koi Hose (per 30mtr roll)	FH7721	153.83
1.25" High Quality Black Koi Hose (per 30mtr roll)	FH7722	107.83
1" High Quality Black Koi Hose (per 30mtr roll)	FH7723	74.15

2" High Quality Black Koi Hose (per meter)	FH773	8.00
2" High Quality Black Koi Hose (per 30mtr roll)	FH774	235.00



Heavy Duty solvent weld hose

I

50mm Pressure flexi (Glues into fitting) per m	FH768	7.39
63mm Pressure Flexi (Glues into fitting) per m	FH769	14.72
50mm Pressure flexi (Glues into fitting) 25mtr roll	FH768b	161.64
63mm Pressure Flexi (Glues into fitting) 25mtr roll	FH769b	322.00



Heavy Duty solvent weld hose

I

1.25" Floating Blue Vac Hose (per 50 mtr)	FH776	176.31
1.5" Floating Blue Vac Hose (per 50 mtr)	FH777	209.69



This hose has a moulded end every 1.5mtrs

FLEXIBLE HOSE

Compression fittings for flexi hose

I

1.25" Compression fitting for hose	FH783	4.76
1.5" Compression fitting for hose	FH784	6.26



Hose clips

V

2" Hose Clips (Stainless jubilee)	FH7821	4.20
1.75" Hose Clips (Black)	FH782	2.04
1.5" Hose Clips (Red)	FH7831	1.96
1.25" Hose Clips (Orange)	FH7832	1.76
1" Hose Clips (Yellow)	FH785	1.68



Barbed hose joiners

I

1" Hose Joiner Barbed	FH759	2.14
1.25" Hose Joiner Barbed	FH760	2.67
1.5" Hose Joiner Barbed	FH761	3.54
1" 90 degree hose joiner Barbed	FH762	2.60
1.25" 90 degree hose joiner Barbed	FH763	3.26
1.5" 90 degree hose joiner Barbed	FH764	4.35
1" Tee hose joiner Barbed	FH765	2.65
1.25" Tee hose joiner Barbed	FH766	4.05
1.5" Tee hose joiner Barbed	FH767	5.14



OASE - Pipe, Hose connectors, valves

J

OASE 75mm Biotec discharge pipe 75mm/1000mm	FS174	26.53
OASE 75mm Biotec discharge pipe 75mm/480mm	FS175	20.73
OASE 75mm Biotec connecting bend 75mm/45°	FS176	15.74
OASE 75mm Biotec connecting bend 75mm/87°	FS177	15.74
OASE 75mm Biotec T-piece 75mm	FS1771	19.07

OASE Hose connector 1 1/2"	FS178	22.39
OASE T-piece 1 1/2"	FS179	32.33
OASE Y-Distributor with valves 1 1/2"	FS180	47.26
OASE Flow Regulator Incl. Hosetails 1 1/2"	FS181	33.15



This 70mm pipe is push fit with built in seals for use with OASE biotec filters

GLUE - SEALANTS

Everweld Solvent Glue

Everweld (Solvent Weld Glue) 120ml	LS1025	4.45
Everweld (Solvent Weld Glue) 240ml	LS1026	7.23
Everweld (Solvent Weld Glue) 500ml	LS1027	13.17



'EVER-WELD' Heavy Bodied, clear solvent weld glue for wet or dry applications.

Competitively priced!

Solvent weld glue / pipe cleaner

Wet R Dry Solvent Weld Glue (240ml)	LS1021	14.39
Wet R Dry Solvent Weld Glue (500ml)	LS1022	26.48
Griffon UNI-100 250ml (hard pipe only)	LS1024	15.13
Griffon WDF-05 250ml (fast dry)	LS1023	15.13
Griffon Pipe Cleaner 125ml	LS1028	9.54
Griffon Pipe Cleaner 500ml	LS1029	19.85

Solvent cement for joining PVC and ABS (flexible) tubes, coupling sleeves and fittings in pressure and drainage up to diameter 160mm. Maximum pressure 16 bar for PVC (PN16) and 5 bar for ABS (PN5)

- Suitable for Wet and Dry Conditions (not under water)
- Extremely fast drying
- For PVC and ABS
- Gap filling (max. 0,8mm) - For Flexible tubes (hoses)
- For Swimming Pool Installations - Brush included
- According to European standard EN 14814



Silicone and sealants

Gold Label Underwater Sealer One Shot 75ml	LS978	17.94
Gold Label Underwater Sealer Black 290ml	LS979	21.91
Silver Label Silicone Black	LS981	20.56
Superstrong FIX + SEAL 290ml Black	LS1017	11.90
Superstrong FIX + SEAL 290ml Clear	LS1018	13.79
Superstrong FIX + SEAL 290ml White	LS1019	13.79
OASE UNifix + (EPDM-Fix)	LS800	29.31
AquaForte Landscaping Foam 500ml	LS1044	12.96
AquaForte X45 spray polysterv. 500ml	LS1045	9.47



SuperStrong Fix n seal- Seals and assembles everything. No odor. High quality permanent elastic glue and sealer for many uses. Adheres to practically any surface. Replaces and combines all standard glues and sealers (silicone, acryl, butyl, etc.) Hardened Fix seal MS is UV-resistant en can be painted. **Size 290 ml.**

AquaForte Landscaping Foam- Won't discolour like other foam! Blends into shadows - Polyurethane sealant; ideal for ponds and waterfalls - Fish and plant safe - Superior adhesive for landscaping projects. Expands and fills voids - Fill knot holes in trees to seal out water and pests - Product has a dark grey colour after curing.

AquaForte Spraybond X45 Premium is a very high quality heat-resistant carbon/pu based contact adhesive for the adhesion of various liners on any surface. Areas of application: **For gluing all types of surfaces.** Thanks for the high solids and rubber content, this adhesive is extremely strong and safe to use. AquaForte Spraybond X45 is also suitable for gluing surfaces sensitive to plasticisers such as PVC. The amount of plasticiser in the PVC must not exceed 16%. Testing is recommended before use.



LINERS

PVC Liner

I

4mtr Wide Liner PVC (0.5mm) (per running meter)	LS992	19.15
6mtr Wide Liner PVC (0.5mm) (per running meter)	LS993	28.74
8mtr Wide Liner PVC (0.5mm) (per running meter)	LS994	38.31

Our economical high quality PVC Pond Liner is suitable for small to medium ponds, having excellent flexibility and high puncture resistance.

All our retail rolls come with an integral tape measure and are individually wrapped for outside storage, they are suitable for both the Mini Roll Stand and the SafeLoad Roll Stand.



Butyl - Firestone - Greenseal

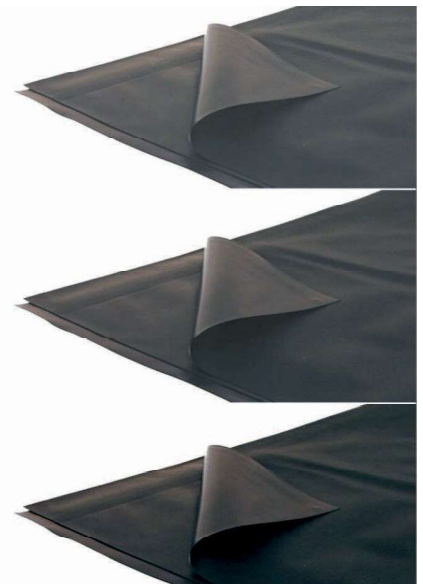
I

BUTYL Liner 0.75mm (per Square meter)	LS995	20.49
EPDM (Firestone) Liner 1mm (per square meter)	LS997	19.33
EPDM (Greenseal) Liner 0.75mm (per square meter)	LS996	14.54
EPDM (Greenseal) Liner 1mm (per square meter)	LS991	17.99

Butyl pond liner is a synthetic rubber membrane with exceptional physical properties making it the ideal choice for lining ponds, lakes, lagoons and streams.

SealEco EPDM (Greenseal) and Butyl pond liner are both synthetic rubber membranes with exceptional physical properties making them the ideal choice for lining ponds, lakes, lagoons and streams. Despite their different chemical compositions, they look and feel the same. As a result of higher current levels of production, EPDM has become more economical than the Butyl rubber.

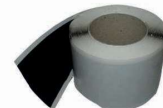
Firestone PondGard is an EPDM Geomembrane specifically designed for garden pond and lake applications. Its formulation and production process makes it perfectly compatible with aquatic life, in accordance with test reports published by the UK Water Research Centre.



Butyl Tape

M

Butyl Tape (60mm wide) per Mtr	LS982	3.51
--------------------------------	-------	------



Underlay

I

Pond Grade Underlay 150g/sqm 2mtrs wide (Per running mtr)	LS999	4.49
---	-------	------

Our underlays offer exceptionally **high performance** and provide a highly effective protective barrier between substrate and liner. We recommend that our Heavy Duty Underlay is used beneath all our liners, not only to help protect liners from penetration by sharp stones, roots, etc, but also to reduce excessive localised stretching of the liner when ground settlement occurs over time.



POND SEALANTS

My Pond MS300



L

MyPond Ms300 - The all purpose pond sealant!

Fish Safe

Seals Underwater

Bonds Liners

Perfect for Pond Window Installation

Bottom Drain Sealing

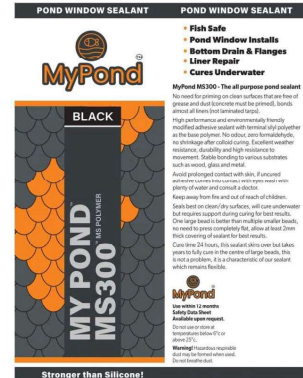
4x Stronger than Silicone

Flexible Sealant, bonds - Concrete- Stone - Wood - Glass - Metal - Rubber - Plastic - GRP

My Pond* MS300 Underwater sealant 290ml NEW!!	LS980	13.99
My Pond* MS300 Underwater sealant 290ml (24pack) NEW!!	LS9801	326.40

No need for priming on clean surfaces that are free of grease and dust (concrete must be primed), bonds almost all liners (not laminated tarps) High performance and environmentally friendly modified adhesive sealant with terminal silyl polyether as the base polymer. No odor, zero formaldehyde, no shrinkage after colloid curing. Excellent weather resistance, durability and high resistance to movement. Stable bonding to various substrates such as wood, glass and metal. Avoid prolonged contact with skin, if uncured adhesive comes into contact with eyes wash with plenty of water and consult a doctor. Keep away from fire and out of reach of children. Seals best on clean/dry surfaces, will cure underwater but requires support during curing. 1 large bead is better than multiple smaller beads, no need to press completely flat, allow at least 2mm thick covering of sealant for best results.

Cure time 24 hours, this sealant skins over but takes years to fully cure in the center of large beads, this is not a problem, it is a characteristic of our sealant which remains flexible.



Gold Label

I

Gold label Underwater Pond Sealer does exactly what the name says, Gold label Underwater Sealer is remarkable and it will seal everything and everything, stainless steel to stainless steel, it will stick steel to plastic, plastic to wood, wood to stone, stone to plastic and what's more as the name suggests it can be used underwater. Yes actually underwater, Gold label Underwater Sealer is a truly remarkable product, imagine being able to seal any leak without having to drain the pond and further more Gold label Underwater Sealer is completely safe for the fish or any other pond life. Gold label Underwater Sealer for Full cure needs 24 hours, initial tack 2-3 hours, can be painted over up to 4 hours.

Bonds all materials even under water. ***Butyl Rubber *Vinyl *Glass *Ceramic *Stone *Concrete *Wood**

Gold label Underwater Pond Sealer is available in black or clear in colour and supplied in a tube ready for application using a skeleton gun and has a Shelf life 12 months if stored in dry conditions between 10-25°C

Gold Label Underwater Sealer One Shot 75ml	LS978	17.94
Gold Label Underwater Sealer Black 290ml	LS979	21.91
Silver Label Silicone Black	LS981	20.56
Gold Label Underwater Sealer CLEAR 290ml	LS976	20.56
Gold Label pond paint CLEAR 1ltr	LS1030	62.31
Gold Label pond paint CLEAR 2.5ltrs	LS1031	117.57
Gold Label pond paint CLEAR 5ltr	LS1032	195.50
Gold Label pond paint BLACK 1ltr	LS1033	62.31
Gold Label pond paint BLACK 2.5ltrs	LS1034	117.57
Gold Label pond paint BLACK 5ltr	LS1035	195.50
Goldf Label Pond Patch (Small)	LS1036	4.18
Goldf Label Pond Patch (Medium)	LS1037	6.33
Goldf Label Pond Patch (Large)	LS1038	10.59



Patches are available in 3 sizes:
 Small - Approx 140 x 190mm (5 1/2" x 7 1/2")
 Medium - Approx 280 x 190mm (11 x 7 1/2")
 Large - Approx 280 x 380mm (11 x 15")

Gold Label aqua pond paint is designed especially for waterproofing and colouring concrete, fibreglass and plastic ponds.

It's as easy as painting a wall at home, this specially formulated paint requires no primer and comes complete with a hardener activator solution for maximum effect sealing your pond. It's water-based so is fish safe and is ready in just two coats plus drying time. **Aqua Pond Paint Features:**

- Simple Waterproofing of Concrete, Plastic or Fibreglass Ponds
- Two-Part Paint System (Mixes with Included Hardener For Maximum Effect)
- No Primer Required & Suitable on Damp Surfaces
- Water-Based Paint = Less Hazardous & Fish Safe
- Can Be Applied with a Brush or Roller
- Ready-to-Use Pond in Just 2 Coats and Drying/Curing Time
- 1-Litre is Suitable to Cover 6-8 Square Metres
- Lasts Approximately 5-10 Years Depending on Application



AVAILABLE IN OTHER COLOURS AT YOUR REQUEST

POND SEALANTS

G4 Pond sealer

M

G4 1kg Clear	LS983	35.99
G4 2.5kg Clear	LS984	72.01
G4 5kg Clear	LS985	115.88
G4 25kg Clear	LS986	479.25
G4 1kg Black	LS987	50.63
G4 2.5kg Black	LS988	105.76
G4 5kg Black	LS989	192.38
G4 25kg Black	LS990	718.88

G4 is a durable deep bonding plastic coating for concrete which can be used without primer at low temperatures to seal in the lime in concrete ponds / water features.



Impermax liquid pond liner

F

AquaForte Impermax grey 2.5 kg	LS1000	35.26
AquaForte Impermax grey 10kg	LS1001	139.27
AquaForte Impermax black 2.5 kg	LS1003	35.26
AquaForte Impermax black 10 kg	LS1004	139.27
Impermax solvent 4 kg	LS1006	50.65
Impermax Pur Cat 1ltr	LS1007	33.08
Impermax PU primer 4 kg	LS1008	82.77
Impermax Humidity primer 5 kg	LS1009	130.65
Geomax Geotextiel 03 x 100 mtr	LS1013	152.83
AquaForte Impermax Paintchlore 4 kg	LS1015	177.48
AquaForte Impermax Paintchlore 20 kg	LS1016	817.15



seamless membrane. The finished membrane is constructed in various layers with the resulting liner being in excess of 1.4-1.9mm thick almost twice the thickness of conventional sheet liners and with the similar finish to fibreglass. As Impermax Aqua is a liquid pond liner, it is painted on and will be as durable as conventional pond liners once cured, being highly elastic and able to withstand expansion, contraction or slight movement in the support structure without compromise to its integrity. Impermax Aqua liquid pond liner is the new era of pond lining, its easy to apply with brush or roller gives a seamless finish, applied in 2 coats to achieve maximum strength and durability, available in a series of colours. Impermax Aqua Liquid rubber is a new single component, high performance waterproofing material, based on Polyurethane, certified according to EEC Directive 98/83/CE, and which can be in direct contact with drinking water for human consumption.

It can be easily applied on different kinds of surfaces used in hydraulic infrastructures such as concrete, mortar, ceramics, fibreglass reinforced polyester, etc. Curing time: 4-6 hours in the summer, 12-24 hours. Apply at least 3 to 4 layers to obtain a membrane thickness of 1,5 to 1,9 mm (2 kilo per m²). It is recommended to use Humidity Primer in most situations. Economic and easy to apply, it delivers a jointless continuous membrane which totally adapts to the surfaces to be protected.

Extreme mechanical and chemical properties. Certified according to EEC Directive 98/83/CE, so it can be in direct contact with drinking water for human consumption. This membrane can easily be applied in spots which are difficult to access with other systems. It is easy to obtain uniform thicknesses combining the product with geomax and our thixotropy agent, even in extremely steep or even vertical areas. Impermax Aqua can be applied even in cases of low temperatures and high relative humidities, obtaining very short cure times in combination with our PUR CAT additive. Product does not require any blends or special primers (it is a one component product).

2kg covers 1m²

Impermax Aqua Application Guidelines

Product must be applied in quantities ranging 1.5 up to 2 kg/m², resulting in a membrane thickness of 1.4 to 1.9 mm.

Ideally, it must be applied in 2 separate coats, best in different colours (assuring enough quantity is applied in each layer).

It is important to mix the product well before its application with an electric mixer, at low rpm (avoiding that too much air enters the resin). It is also necessary to let the product rest for a few minutes so that air bubbles disappear.

It is recommended to use Humidity Primer (200g per square meter) in most situations. Impermax can be applied even in cases of low temperatures (< 5°C) and high relative humidity's, obtaining very short cure times in combination with our PUR Cat additive.